

Medical Lighting Solutions

Light Black

Examination Lighting

Planet Lighting FlexLED	1
Planet Lighting ULED	2
Planet Lighting ULEDPlus	3

Minor Procedure Lighting

Planet Lighting Phantom	4
Planet Lighting PentaLED 12	5
Planet Lighting PentaLED 28	6

Minor Surgical Lighting

Planet Lighting PentaLED 30E	7
Planet Lighting Quattroluci LED	8
Planet Lighting Unica 520	9

Major Surgical Lighting

Planet Lighting U 29	10
Planet Lighting Unica 860	11

Healthcare Lighting

Intralux LifeLight	12
Planet Lighting Over Bed Light (OBL)	13

Examination Lighting

Planet Lighting FlexLED



Applications

- General practice
- General examination
- Nursing and workstations
- First aid stations

Background

FlexLED is one of the most economical and flexible LED examination lights ever made in Australia.

Perfect for general practices and workstations.

FlexLED offers over 40,000 lux at 1 metre, a 4000K colour temperature and unlimited range of movement with a hygienically sealed flexible arm and head.

It is so flexible it allows accurate positioning of the lamp head above almost any work surface.

Available in a wall, desk, or trolley option.

Technical

- 40,000+ lux at 1 metre
- Colour temperature 4,000°K
- Colour rendering (Ra) 95
- Light beam angle 10°
- Total wattage including driver 12W
- 50,000 hour expected lifetime
- 3-year warranty
- Australian designed and built

Features

- Hygienically sealed arm and head
- Unlimited range of movement
- Desk, table and trolley mountable

40,000
lux @1m

12
power (W)

40,000
LED life (hours)

3
warranty (years)

Planet Lighting ULED



Applications

- Close examination
- Intensive care
- Recovery rooms
- Dermatology
- Aged care
- General Practice
- Outpatient
- Consultant rooms
- Gynaecological examination

Background

ULED's incredible design story is steeped in 60 years medical lighting manufacture experience combined with a decade of LED lighting innovation.

ULED brings examination lighting into the future.

Cost-effective yet built to last, ULED's ingenious floating spring arm enables intuitive and perfect positioning.

Its powerful yet cool beam provides 40,000+ lux at 1 metre.

ULED makes cleaning and operation easy with a fully sealed and touch sensitive membrane switch complete with 4-stage dimming.

Plus, its push-to-release detachable light head makes upgrade or maintenance possible without a technician.

ULED is effortless light – just as it should be.

Every ULED is designed, made, and tested in our purpose-built Australian facility.

It comes with an impressive 5-year warranty with industry-leading support and is available in a range of mount options.

Technical

- 40,000+ lux at 1 metre
- Colour temperature 4,000°K
- Colour rendering (Ra) 95
- D10 270mm
- D50 125mm
- COI compliant
- IP65 light head shaped for easy cleaning/sterilisation
- Total wattage including driver 14W
- L70 50,000 hour expected lifetime
- 5-year warranty
- Australian designed and built

Features

- Antimicrobial Silver Ion Technology treatment to inhibit the growth of bacteria
- Quick release head
- Next-to-zero maintenance
- All metal construction for durability
- Mounting brackets for every application (ceiling, wall, extended wall and trolley mount)
- Large task area action zone (Ø2100mm x 1850mm height adjustment)
- Minimum intrusion into the workspace
- Multi axis head rotation
- Retrofittable to UDP Planet Halogen Light mounts
- Light weight – less than 5kg including ceiling mounts.
- Low operational cost
- Complies with AS/NZ IEC60601-2-41 (Medical electrical equipment – Particular requirements for safety – Surgical luminaires and luminaires for diagnosis)
- Prompt supply of spare parts, technical service, and support

40,000
lux @1m

14
power (W)

40,000
LED life (hours)

5
warranty (years)

Planet Lighting ULEDPlus



Applications

- Close examination
- Over bed
- Intensive care
- Recovery rooms
- Dermatology
- Aged care
- General Practice
- Outpatient
- Consultant rooms
- Gynaecological examination

Background

ULEDPlus has been specifically designed for close examination and minor procedure lighting tasks.

ULEDPlus shares the same reliable ULED design but gives you approximately 30% more bright light output with an impressive 50,000+ lux at 1 metre.

ULEDPlus is built to last, Australian designed and manufactured with an all-metal construction and powder coat finish for durability and easy cleaning, and a 50,000-hour LED life (L70) over 15-25 years in normal use.

It also features ULED's exceptional pinch free suspension arm for user and patient safety.

Available in Wall, Ceiling or Trolley Mounted configurations.

A Cardiac protected version (fully earthed) is also available.

Technical

- 50,000+ lux at 1 metre
- Colour temperature 4,000°K
- Colour rendering (Ra) 95
- D10 270mm
- D50 125mm
- COI compliant
- IP65 light head shaped for easy cleaning/sterilisation
- Total wattage including driver 20W
- L70 50,000 hour expected lifetime
- 5-year warranty
- Australian designed and built

Features

- Antimicrobial Silver Ion Technology treatment to inhibit the growth of bacteria
- Quick release head
- Next-to-zero maintenance
- All metal construction for durability
- Mounting brackets for every application (ceiling, wall, extended wall and trolley mount)
- Large task area action zone (Ø2100mm x 1850mm height adjustment)
- Minimum intrusion into the workspace
- Multi axis head rotation
- Retrofittable to UDP Planet Halogen Light mounts
- Light weight - less than 5kg including ceiling mounts.
- Low operational cost
- Complies with AS/NZ IEC60601-2-41 (Medical electrical equipment - Particular requirements for safety - Surgical luminaires and luminaires for diagnosis)
- Prompt supply of spare parts, technical service, and support

50,000
lux @1m

20
power (W)

50,000
LED life (hours)

5
warranty (years)

Minor Procedure Lighting

Planet Lighting Phantom



Applications

- Minor procedure
- Pre- and Post-Operative Areas
- Emergency
- Intensive Care
- Day Surgeries
- High dependency bays
- Skin Cancer

Background

Delivering a cool and efficient 70,000+ lux at 1 metre, Phantom’s sleek, lightweight design and large task area action zone make it perfect for a range of applications – and with only minimal intrusion to the task area.

Plus, Phantom’s completely sealed IP65 head gives quick access to ON/OFF and 4 stage dimming control, providing easy operation.

Plus, its quick-release head is fully removable for technician-free maintenance.

Phantom offers an improved working environment, significantly reducing on-going maintenance with low operational costs and is a "greener" alternative to similar products.

It’s easy clean surfaces and removable handle allow superior infection control and its precise arm with multiple rotation points give you light positioning freedom and comes complete with an adjustable floating balance.

Designed to last, Phantom is 100% designed and manufactured in Australia for your confidence.

The Planet Medical Phantom is the solid-state medical light that needs to be experienced.

Technical

- Powerful 70,000+ lux at 1 metre
- Colour temperature 4,000°K
- Colour rendering (Ra) 95
- D10 220mm
- D50 110mm
- COI compliant
- IP65 light head shaped for easy cleaning/sterilisation
- Total wattage including driver 31W
- L70 50,000 hour expected lifetime
- 5-year warranty
- Australian designed and built

Features

- Antimicrobial Silver Ion Technology treatment to inhibit the growth of bacteria
- Quick release head
- Low operational cost and minimal maintenance
- All metal construction for durability
- Large task area action zone (Ø2100mm x 1850mm height adjustment)
- Minimum intrusion into the workspace
- Multi axis head rotation
- 3 continuous rotation points
- Light weight – less than 11kg including ceiling mounts
- Complies with AS/NZ IEC60601-2-41 (Medical electrical equipment – Particular requirements for safety – Surgical luminaires and luminaires for diagnosis)
- Prompt supply of spare parts, technical service, and support

70,000 lux @1m	31 power (W)	50,000 LED life (hours)	5 warranty (years)
-------------------	-----------------	----------------------------	-----------------------

Planet Lighting PentaLED 12



Applications

- Pre- and post-operative areas
- Emergency areas
- Intensive care
- Day surgeries
- Women’s health

Background

The revolutionary PentaLED 12 is a procedure surgery light with fixed focus technology consisting of 12 elliptical parabolas uniformly reflecting the lights of the LEDs to eliminate any shadow formation from the operating field.

Ergonomically designed with no glare for the surgeons.

The PentaLED 12 has a low temperature operation and 360° rotation ensuring that it is suitable for a broad range of surgical procedures.

Available as a PentaLED 12 + PentaLED 12 dual light head. This Version is recommended to eliminate the additional shadows, in the operating area, during micro-surgical operations carried out by a team.

Technical

- 100,000 lux at 1m
- Colour temperature 4,500°K
- Colour rendering (Ra) 96
- Colour rendering (R9) 92
- D10 160mm
- D50 70mm
- Depth of illumination at 60% of 750mm
- Depth of illumination at 20% of 1,500mm
- Working distance 700mm - 1,400mm
- 50,000hour + expected lifetime
- Total wattage including driver 40W
- IEC 60601-2-41
- 3-year warranty

Features

- Adjustable light intensity
- Low-temperature operation
- Autoclavable handle
- Ergonomic design
- 360° continuous movement
- Ultra-light structure,
- Fixed focus technology

100,000 lux @1m	40 power (W)	50,000 LED life (hours)	3 warranty (years)
--------------------	-----------------	----------------------------	-----------------------

Planet Lighting PentaLED 28



Applications

- Pre- and post-operative areas
- Emergency areas
- Intensive care
- Minor day surgeries
- Women’s health
- Treatment rooms

Background

The PentaLED 28 offers exceptional technical performance and great operating versatility.

The PentaLED 28 differs from the PentaLED 12 by having 28 LEDs with lens arranged in a radial pattern to reduce shadowing and ensure three-dimensional lighting.

The high efficiency of the LED sources and the low current absorption permit obtaining very low IR emissions and a cold light in the operating field.

Focusing and light field adjustment are achieved by turning the central knob.

Through a digital membrane, the switch-on and switch-off functions can be accessed, the light intensity can be adjusted, and the colour temperature can be changed between 4500 and 5000°K.

Technical

- 120,000 lux at 1m
- Colour temperature adjustable between 4,500 and 5,000°K
- Colour rendering (Ra) 96 at 4,500°K
- Colour rendering (Ra) 92 at 5,000°K
- Colour rendering (R9) 92 at 4,500°K
- Colour rendering (R9) 90 at 5,000°K
- D10 280mm
- D50 135mm
- Depth of illumination at 60% of 920mm
- Depth of illumination at 20% of 1,550mm
- Working distance 700mm - 1,400mm
- 50,000hour + expected lifetime
- Total wattage including driver 85W
- IEC 60601-2-41
- 3-year warranty

Features

- Adjustable light intensity
- Low-temperature operation
- Autoclavable handle
- Ergonomic design
- 360° continuous movement
- Ultra-light structure,
- Manual focus adjustment

120,000
lux @1m

85
power (W)

50,000
LED life (hours)

3
warranty (years)

Minor Surgical Lighting

Planet Lighting PentaLED 30E



Applications

- Emergency
- Resus
- Aesthetic
- Endoscopy/Angiography
- ENT/Ophthalmology
- Urology
- Gynaecology
- Day Procedures

Background

PentaLED 30E forms part of the Rimsa E-series range.

What sets this light apart in its class is its slimline profile and the E-view system. This is an innovative system allowing the surgeon to expand/narrow the illuminated operating field electronically, without altering the intensity of the light at the centre of the field (Ec).

The PentaLED 30E has 30 elliptical reflectors split into 6 modules, each containing 5 LEDs, providing up to 160,00 lux.

Like all Rimsa surgical lights it utilises an indirect beam ensuring a shadow free operating field.

Light intensity and colour temperature are adjustable using a membrane keyboard. PentaLED 30E offers both 4500K and 5000K.

The light is protected by a tempered ground glass diffuser screen and the precision engineered arm offers 360° rotation of the stable and lightweight arm.

Optional features include Back-up/UPS battery with automatic charger, SD TVCC camera, HD TVCC camera, IR remote control, wall control panel, arm and TFT video.

Available as dual head versions PentaLED 30E + PentaLED 30E; PentaLED 30E + PentaLED 81; PentaLED 30E + PentaLED 105.

Technical

- 160,000 lux at 1m
- Colour temperature adjustable between 4,500 and 5,000°K
- Colour rendering (Ra) 96
- Colour rendering (R9) 90+
- Adjustable light field diameter 140-260mm
- Dimming 20 - 100%
- D10 210mm
- D50 80mm
- Depth of illumination at 60% of 600mm
- Depth of illumination at 20% of 950mm
- Working distance 700mm - 1,400mm
- 50,000hour + expected lifetime
- Total wattage including driver 60W
- 3-year warranty

Features

- Electronic diameter adjustment
- Individually wired boards and modules ensures uninterrupted operation
- Autoclavable handle

160,000
lux @1m

60
power (W)

50,000
LED life (hours)

3
warranty (years)

Planet Lighting Quattroluci LED



Applications

- Emergency
- Resus
- Oral
- Maxillofacial
- Aesthetic plastic
- Day procedures

Background

This model is especially recommended for operating theatres where the surgeon needs a light and flat lamp to avoid interference with other overhead equipment.

Excellent for oral and maxillofacial surgery and aesthetic plastic surgery.

The multi-circular dome consists of 36 LED lenses divided into four modules, which ensure shadow suppression and three-dimensional light.

The multi-circular reflector, designed to light up the work area thoroughly and suppress all the shadows, is equipped with handy side handles to facilitate positioning.

The lighting body, ultra-flat in order to not disturb the operator, is equipped with ultra-resistant polycarbonate screen which guarantees protection against possible accidental collisions.

Quattroluci LED can be easily positioned thanks to its rotation on 4 axes.

Available as dual head versions QUATTROSOX2, single headed versions QUATTROSO, wall mounted QUATTROPA, and trolley QUATTROPI models.

Technical

- 160,000 lux at 1m
- 4900K
- Colour rendering (Ra) 94
- Fixed light field diameter 300mm
- Dimming 20 - 100%
- D10 270mm
- Depth of illumination at 60% of 1,100mm
- Depth of illumination at 20% of 1,740mm
- Light head diameter 600mm
- 50,000hour+ LED lifetime
- Total wattage consumption 104W
- 3-year warranty

Features

- Lightweight and flat lamp to avoid interference with other overhead equipment

160,000 lux @1m	104 power (W)	50,000 LED life (hours)	3 warranty (years)
--------------------	------------------	----------------------------	-----------------------

Planet Lighting Unica 520



Applications

- Emergency
- Resus
- Aesthetic
- Endoscopy/Angiography
- ENT/Ophthalmology
- Urology
- Gynaecology
- Day Procedures

Background

Your ally in the operating room, Unica 520's professional full feature set, patented shadow suppression technology and zero glare performance has you covered.

Equipped with Rimsa's new patented 2R Double Reflection, Unica 520 maximises the light emitting surface, obtaining a high performance, deep shadowless light up to 160,000 lux - completely glare free.

An evolution of the renowned PentaLED E-series, Unica 520 includes the renowned E-view system allowing the surgeon to expand/narrow the illuminated operating field electronically, without altering the intensity of the light at the centre of the field (Ec). Its high performance, indirect beam reduces glare and ensures a shadow free operating field.

Light intensity and colour temperature are adjustable using a membrane keyboard with 7 colour temperature selections 3800K through to 5000K.

Unica's slimline design and highly flexible arm movement add to its intuitive and premium feature set.

Optional features include Back-up/UPS battery with automatic charger, SD TVCC camera, HD TVCC camera, IR remote control, wall control panel, arm and TFT video.

Available as dual head versions: Unica 520 Twin, Unica 520 Twin (double yolk), Unica 860+520, and single versions: Unica 520 single, Unica 520 single (double yolk) and Unica 520 Trolley.

Technical

- 160,000 lux at 1m
- 7 selections: 3800K through 5000K
- Colour rendering (Ra) 96
- Colour rendering (R9) 96
- Adjustable light field diameter 210 - 350 mm
- Dimming 25 - 100%
- D10 210mm
- D50 110mm
- Depth of illumination at 60% of 490mm
- Depth of illumination at 20% of 1,030mm
- Working distance 700mm - 1,400mm
- 50,000hour+ LED lifetime
- Total wattage consumption 60W
- IP42
- 3-year warranty

Features

- Patented 2R Double Reflection technology enabling glare-free, deep, shadowless light.
- Electronic Diameter adjustment

160,000
lux @1m

60
power (W)

50,000
LED life (hours)

3
warranty (years)

Major Surgical Lighting

Planet Lighting U 29



Applications

- Emergency
- Resus
- Aesthetic
- Endoscopy/Angiography
- ENT/Ophthalmology
- Urology
- Gynaecology
- Day Procedures

Background

U 29 expands on the renowned PentaLED series, now in an especially slimline, compact, and affordable package.

U 29 inherits Rimsa's E -view system allowing the surgeon to expand/narrow the illuminated operating field electronically, without altering the intensity of the light at the centre of the field (Ec). Its high performance, indirect beam reduces glare and ensures a shadow free operating field.

Light intensity and colour temperature are adjustable using a membrane keyboard with selections of 4500K and 5000K.

Optional features include Back-up/UPS battery with automatic charger, SD TVCC camera, HD TVCC camera, IR remote control, wall control panel, arm and TFT video.

Available as dual head or single versions, with or without double yolk arm.

Technical

- 160,000 lux at 1m
- Selection of 4500K and 5000K
- Colour rendering (Ra) 96
- Colour rendering (R9) 90+
- Adjustable light field diameter 140mm-230mm
- Dimming 20 - 100%
- D10 200mm
- D50 124mm
- Depth of illumination at 60% of 490mm
- Depth of illumination at 20% of 1,350mm
- Working distance 700mm - 1,400mm
- 50,000hour+ LED lifetime
- Total wattage consumption 60W
- IP42
- 3-year warranty

Features

- Electronic diameter adjustment
- Individually wired boards and modules ensures uninterrupted operation

160,000
lux @1m

60
power (W)

60,000
LED life (hours)

3
warranty (years)

Planet Lighting Unica 860



Applications

- Emergency
- Resus
- Aesthetic
- Endoscopy/Angiography
- ENT/Ophthalmology
- Urology
- Gynaecology
- Day Procedures

Background

Your ally in the operating room, Unica 860 has you covered with a professional full feature set including patented shadow suppression technology and zero glare performance. Equipped with Rimsa's new patented 2R Double Reflection, Unica 860 maximises the light emitting surface, obtaining a high performance, deep shadowless light up to 160,000 lux - completely glare free.

An evolution of the renowned PentaLED E-series, Unica 860 includes the renowned E-view system allowing the surgeon to expand/narrow the illuminated operating field electronically, without altering the intensity of the light at the centre of the field (Ec). Its indirect beam, with generous diameter adjustment up to 380mm, reduces glare and ensures a shadow free operating field.

Light intensity and colour temperature are adjustable using a membrane keyboard with 7 colour temperature selections 3800K through to 5000K. Unica's slimline design and highly flexible arm movement add to its intuitive and premium feature set.

Optional features include Back-up/UPS battery with automatic charger, SD TVCC camera, HD TVCC camera, IR remote control, wall control panel, arm and TFT video.

Available as dual head versions: Unica 520 Twin, Unica 520 Twin (double yolk), Unica 860+520, and single versions: Unica 520 single, Unica 520 single (double yolk) and Unica 520 Trolley

Technical

- 160,000 lux at 1m
- 7 selections: 3800K through 5000K
- Colour rendering (Ra) 97
- Colour rendering (R9) 99
- Adjustable light field diameter 210 - 380 mm
- Dimming 25 - 100%
- D10 230mm
- D50 130mm
- Depth of illumination at 60% of 620mm
- Depth of illumination at 20% of 850mm
- Working distance 700mm - 1,400mm
- 50,000hour+ LED lifetime
- Total wattage consumption 130W
- IP42
- 3-year warranty

Features

- Patented 2R Double Reflection technology enabling glare-free, deep, shadowless light.
- Electronic diameter adjustment

160,000 lux @1m	130 power (W)	50,000 LED life (hours)	3 warranty (years)
--------------------	------------------	----------------------------	-----------------------

Healthcare Lighting

Intralux LifeLight



Applications

- Hospital wards
- Age care facilities
- High risk facilities
- Secure facilities
- Mental health facilities
- Cyanosis compliance

Background

Lifelight Linear 900 is a game-changer in healthcare lighting, combining COI compliance with architectural elegance. Its low-profile design prevents it from becoming an unwanted shelf or injury hazard and makes it visually appealing.

The fixture offers a range of control options, including DALI and Casambi, and even features an anti-ligature model for higher-risk rooms.

Designed for overhead bed lighting, it matches common bed widths and uses asymmetric optics for uniform horizontal lighting, eliminating the need for harsh downlights. Symmetric downlighting is also available for reading purposes.

With an impressive output of up to 4745 lumens per metre and multiple finish choices, this fully integrated luminaire simplifies installation and transforms the healthcare lighting landscape.

Technical

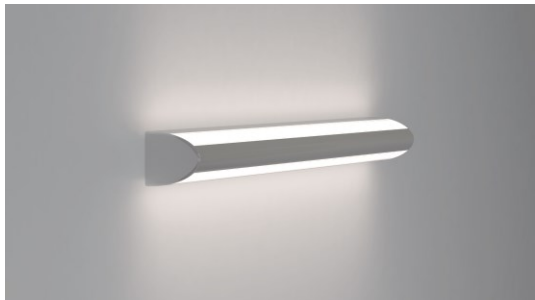
- Colour temperature 3,000°K or 4,000°K
- Colour rendering (Ra) 90+
- Macadam 3 step
- AS/NZS 1680.2.5 section 4.1, COI compliant (4000K)
- 868mm long x 41mm wide x 70mm high
- Two light distributions:
 - Asymmetric
 - Symmetric
- Four lighting configurations:
 - Up
 - Down
 - Up + Down
- Up to 4,745 + 4,745 delivered lumens
- Fixed output, DALI dimmable, Push to Dim, 1-10V or Casambi control
- L90 B10 42,000+ hour expected lifetime
- L80 B10 72,000+ hour expected lifetime
- 5-year warranty

Features

- Super slimline proportions
- IP44
- Wall mounting back plate for secure fixing and ease of maintenance
- Internal electrical plug for ease of maintenance
- Black, white or RAL finish

692 - 8,542 lumen	6 - 70 power (W)	42,000+ LED life (hours)	5 warranty (years)
----------------------	---------------------	-----------------------------	-----------------------

Planet Lighting Over Bed Light (OBL)



Applications

- Hospital wards
- Age care facilities
- Cyanosis compliance
- Circadian Rhythm Control
- Dermatology

Background

The Planet Medical OBL Overbed Light is a wall mounted LED over bed luminaire with an impressive feature set.

Designed and manufactured in Australia with an elegant slimline design, OBL is "clean safe" for infection control and is highly configurable for a light distribution that suits you best, including glare management options as well as Circadian Rhythm Control, Cyanosis compliance, dimming and Tuneable White.

OBL is available in either a 0.5 metre up to 30-watt 3,000 plus lumen or a 1 metre up to 60-watt 7000 plus lumen configuration.

Technical

- Colour temperature 3,000°K or 4,000°K
- Colour rendering (Ra) 96+
- AS/NZS 1680.2.5 section 4.1, COI compliant (4000K)
- Two length options:
 - 1m, max 60W
 - 0.5m, max 30W
- Four lighting configurations:
 - Up
 - Down
 - Up + Down
 - Above + Nightlight
- Fixed output, DALI dimmable or Push to Dim
- L70 54,000+ hour expected lifetime
- 3-year warranty

Features

- Antimicrobial Silver Ion Technology treatment to inhibit the growth of bacteria
- Slimline design
- Top and bottom are tapered toward the front for asymmetric throw of light and easy cleaning
- IP64 easy to clean for infection control
- Wall mounting back plate for secure fixing and ease of maintenance
- Internal electrical plug for ease of maintenance
- Excellent glare control - complies with AS/NZS1680.2.5 section 4.1

700 - 7,000 lumen	7.5 - 60 power (W)	50,000 LED life (hours)	3 warranty (years)
----------------------	-----------------------	----------------------------	-----------------------

